

## Appendix IV

### Maps

This map displays the Fort Worth, Texas area, featuring the Colorado River and major transportation routes. Key elements include:

- Highways:** I-35, I-83, US-71, US-290, and FM 973.
- Streets:** Anderson Ln, Conover Rd, E MLK Blvd, Oak Springs Dr, Airport Blvd, Lyons Rd, Springdale Rd, Montpelier Dr, Ben White Blvd, E Orlott St, Pleasant Valley Rd, Riverside Dr, Parker Ln, Congress Ave, S Fair St, N Lamar Blvd, and Maple Blvd.
- Geographic Features:** Colorado River, Fort Worth Stockyards, and the airport (indicated by an airplane icon).
- Parcel Identification:** Numerous numbered parcels are shown, with some highlighted in a darker shade of gray.
- Orientation:** A compass rose in the bottom right corner indicates North (N), South (S), East (E), and West (W).
- Scale:** A scale bar in the bottom left corner shows distances in miles (0, 1, 2, 3, 4, 5).

Source: 2000 Census

The City of Austin is statutorily required to designate priority areas for commercial management.

This map displays the Fort Worth, Texas area, featuring the Colorado River and major transportation routes. Key elements include:

- Highways:** I-35, I-83, US-71, US-290, and FM 973.
- Streets:** Anderson Ln, Conover Rd, E MLK Blvd, Oak Springs Dr, Airport Blvd, Lyons Rd, Springdale Rd, Montpelier Dr, Ben White Blvd, E Orlott St, Pleasant Valley Rd, Riverside Dr, Parker Ln, Congress Ave, S Fair St, N Lamar Blvd, and Maple Blvd.
- Geographic Features:** Colorado River, Fort Worth Stockyards, and the airport (indicated by an airplane icon).
- Parcel Identification:** Numerous numbered parcels are shown, with some highlighted in a darker shade of gray.
- Orientation:** A compass rose in the bottom right corner indicates North (N), South (S), East (E), and West (W).
- Scale:** A scale bar in the bottom left corner shows distances in miles (0, 1, 2, 3, 4, 5).

The City of Austin is statutorily required to designate priority areas for commercial management.

Source: 2000 Census

This map illustrates the Fort Collins, Colorado area, highlighting the Colorado River and its proximity to the city. The river flows from the northwest to the southeast, with several bridges crossing it. Major highways shown include I-25 (Shoshone Ave), I-76 (Front St), I-70 (E. Ave), and I-78 (S. Ave). The map also displays numerous local streets, including Main St, Lincoln St, and various residential roads. A compass rose in the bottom right corner indicates North (N), South (S), East (E), and West (W). A scale bar in the bottom left corner shows distances in miles (0 to 10) and kilometers (0 to 16). The map is labeled with various street names and highway numbers, providing a comprehensive overview of the region.

Source: 2000 Census

- ID Neighborhood Plan

1 ALLANDALE

2 BARTON HILLS

3 BOULDIN CREEK

4 BRENTWOOD

5 CENTRAL EAST AUSTIN

6 CHESTNUT

7 CORONADO HILLS

8 CRESTVIEW

9 DAWSON

10 DOWNTOWN

11 EAST CESAR CHAVEZ

12 EAST CONGRESS

13 FRANKLIN PARK

14 GALINDO

15 GATEWAY

16 GEORGIAN ACRES

17 GOVALLE

18 HANCOCK

19 HERITAGE HILLS

20 HIGHLAND

21 HOLLY

22 HYDE PARK

23 JOHNSTON TERRACE

24 MLK

25 MLK-183

26 SOUTH LAMAR

27 MCKINNEY

28 MONTOPLIS

29 NORTH AUSTIN CIVIC ASSOCIATION

30 NORTH BURNET

31 NORTH LAMAR

32 NORTH LOOP

33 NORTH SHOAL CREEK

34 NORTH UNIVERSITY

35 OLD WEST AUSTIN

36 PARKER LANE

37 PECAN SPRINGS-SPRINGDALE

38 PLEASANT VALLEY

39 RMMA

40 RIVERSIDE

41 ROSEDALE

42 ROSEWOOD

43 SOUTH MANCHACA

44 SOUTH RIVER CITY

45 SOUTHEAST

46 ST. EDWARDS

47 ST. JOHNS

48 TRIANGLE STATE

49 UT

50 UNIVERSITY HILLS

51 UPPER BOGGY CREEK

52 WEST CONGRESS

53 WEST UNIVERSITY

54 WESTGATE

55 WINDSOR HILLS

56 WINDSOR PARK

57 WINDSOR ROAD

58 WOOTEN

59 ZILKER

60 GARRISON PARK

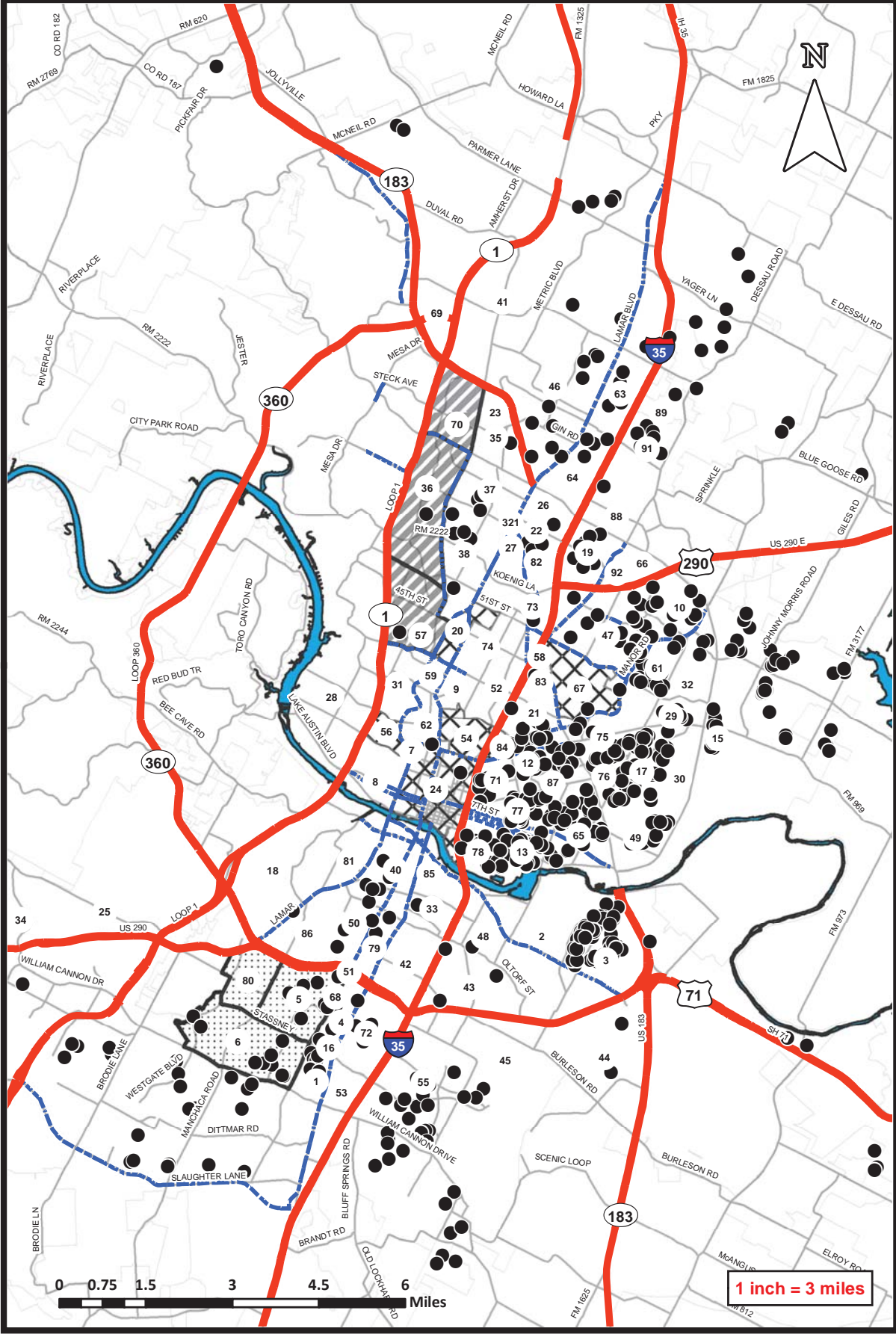
61 SWEETBRIAR

62 EAST OAK HILL

63 WEST OAK HILL

64 OLD ENFIELD

65 WEST AUSTIN NEIGHBORHOOD GROUP



● CDBG-HOME LOCATIONS FY11-12

— Core Transit Corridors

Neighborhood Plan

STATUS

Future Planning Area

Approved w/ Zoning

Non-Neigh. Planning Area

Planning Underway/Appr. Begin

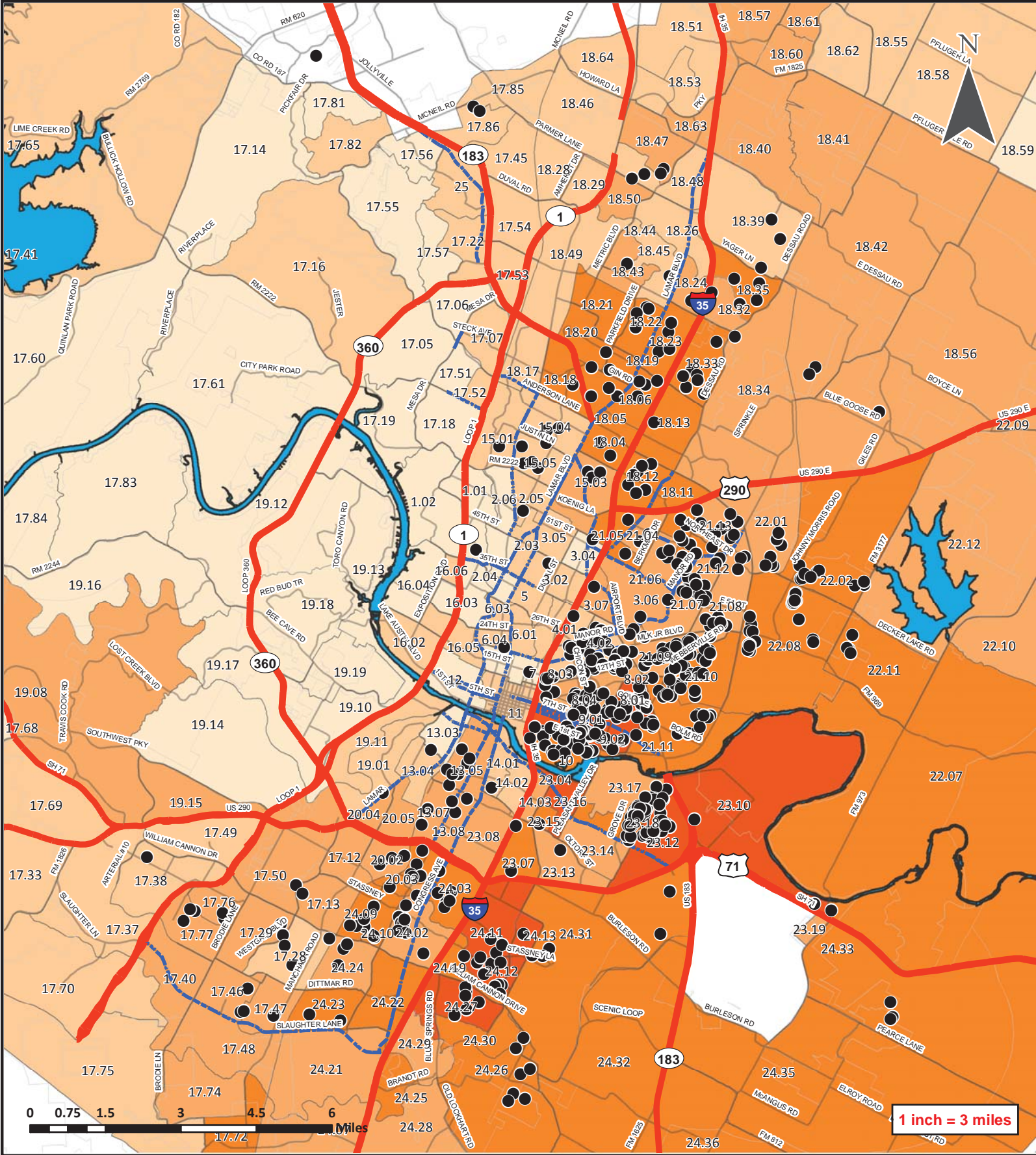
# LOCATION OF CDBG & HOME EXPENDITURES: FY 2011-12 MEDIAN FAMILY INCOME BY CENSUS TRACT



This map has been produced by the Neighborhood Housing and Community Development Office for the sole purpose of geographic reference. No warranty is made by the City of Austin regarding specific accuracy or completeness. Created November 2012

Source(s): City of Austin;  
U.S. Department of Housing and Urban Development-  
FY 2011-12 Expenditure Data and  
U.S. Census Bureau; 2010 Decennial Census





## LOCATION OF CDBG & HOME EXPENDITURES: FY 2011-12

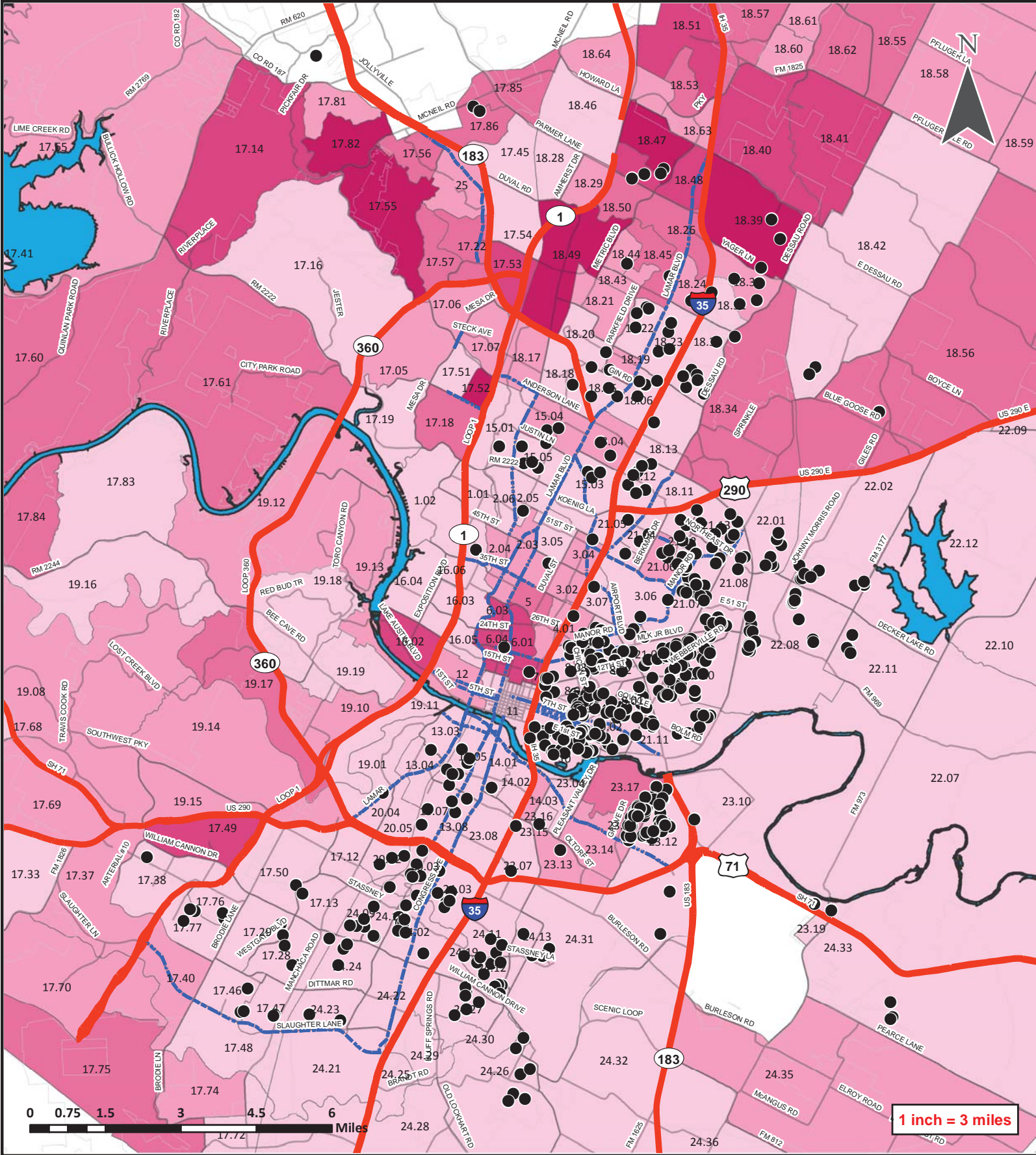
% HISPANICS BY CENSUS TRACT



This map has been produced by the Neighborhood Housing and Community Development Office for the sole purpose of geographic reference. No warranty is made by the City of Austin regarding specific accuracy or completeness. Created November 2012

Source(s): City of Austin;  
U.S. Department of Housing and Urban Development-  
FY 2011-12 Expenditure Data and  
U.S. Census Bureau; 2010 Decennial Census





## LOCATION OF CDBG & HOME EXPENDITURES: FY 2011-12

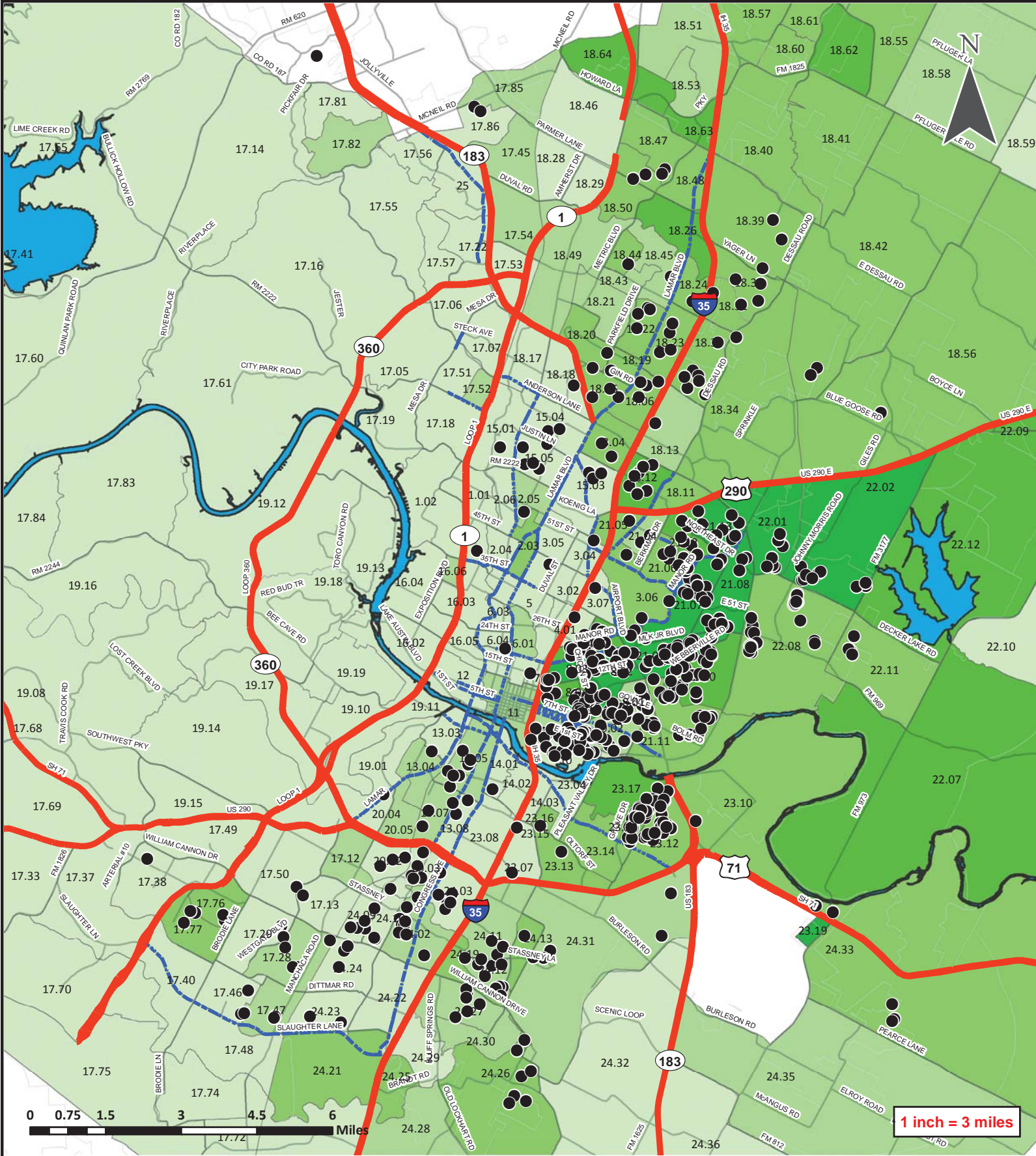
% OF ASIAN AMERICANS BY CENSUS TRACT



This map has been produced by the Neighborhood Housing and Community Development Office for the sole purpose of geographic reference. No warranty is made by the City of Austin regarding specific accuracy or completeness. Created November 2012

Source(s): City of Austin;  
U.S. Department of Housing and Urban Development-  
FY 2011-12 Expenditure Data and  
U.S. Census Bureau; 2010 Decennial Census





## LOCATION OF CDBG & HOME EXPENDITURES: FY 2011-12

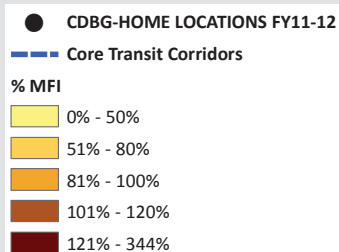
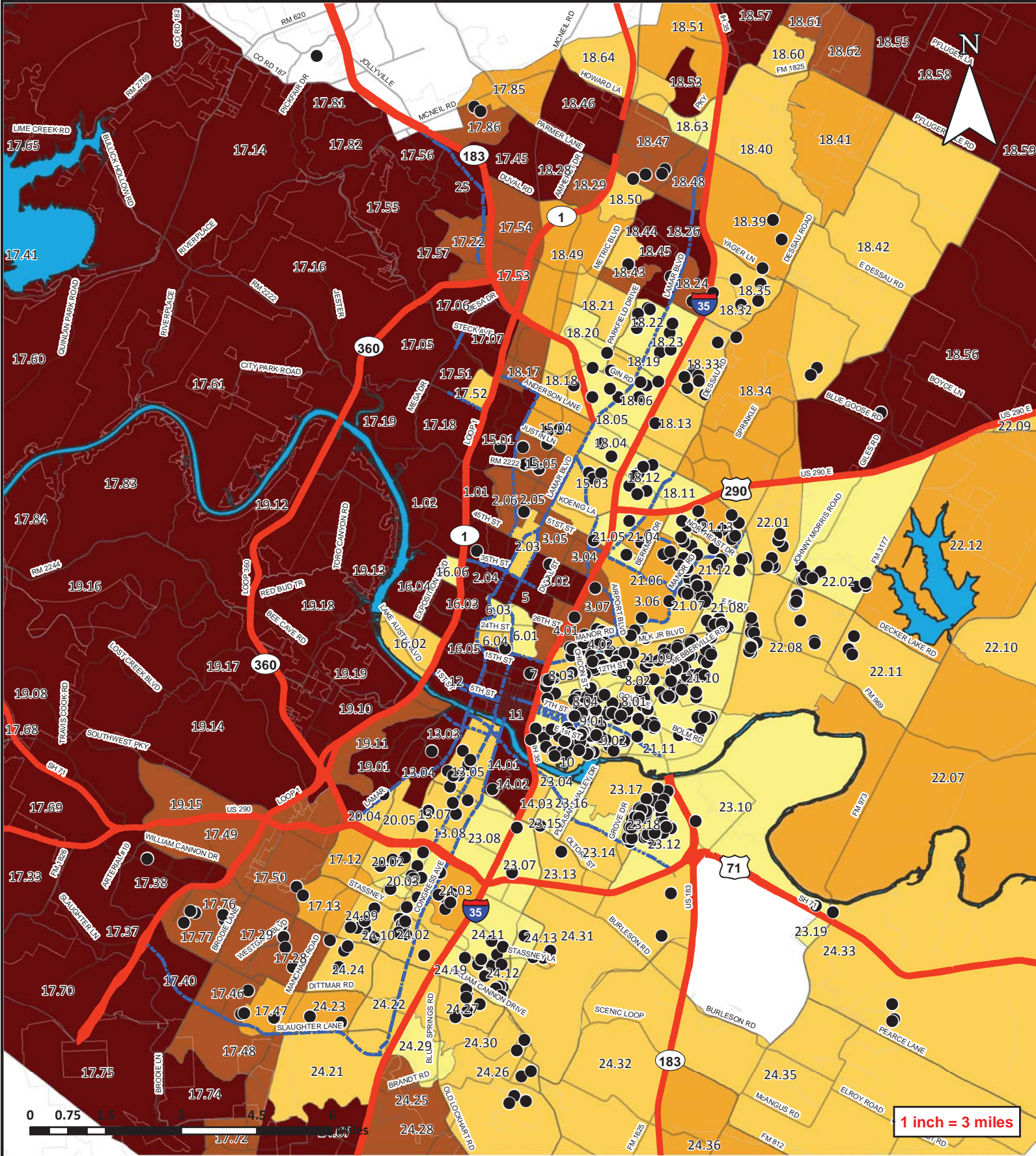
### % OF AFRICAN AMERICANS BY CENSUS TRACT



This map has been produced by the Neighborhood Housing and Community Development Office for the sole purpose of geographic reference. No warranty is made by the City of Austin regarding specific accuracy or completeness. Created November 2012

Source(s): City of Austin;  
U.S. Department of Housing and Urban Development-  
FY 2011-12 Expenditure Data and  
U.S. Census Bureau; 2010 Decennial Census





## LOCATION OF CDBG & HOME EXPENDITURES: FY 2011-12

### MEDIAN FAMILY INCOME BY CENSUS TRACT



This map has been produced by the Neighborhood Housing and Community Development Office for the sole purpose of geographic reference. No warranty is made by the City of Austin regarding specific accuracy or completeness. Created November 2012

Source(s): City of Austin;  
U.S. Department of Housing and Urban Development-  
FY 2011-12 Expenditure Data and  
U.S. Census Bureau; 2010 Decennial Census